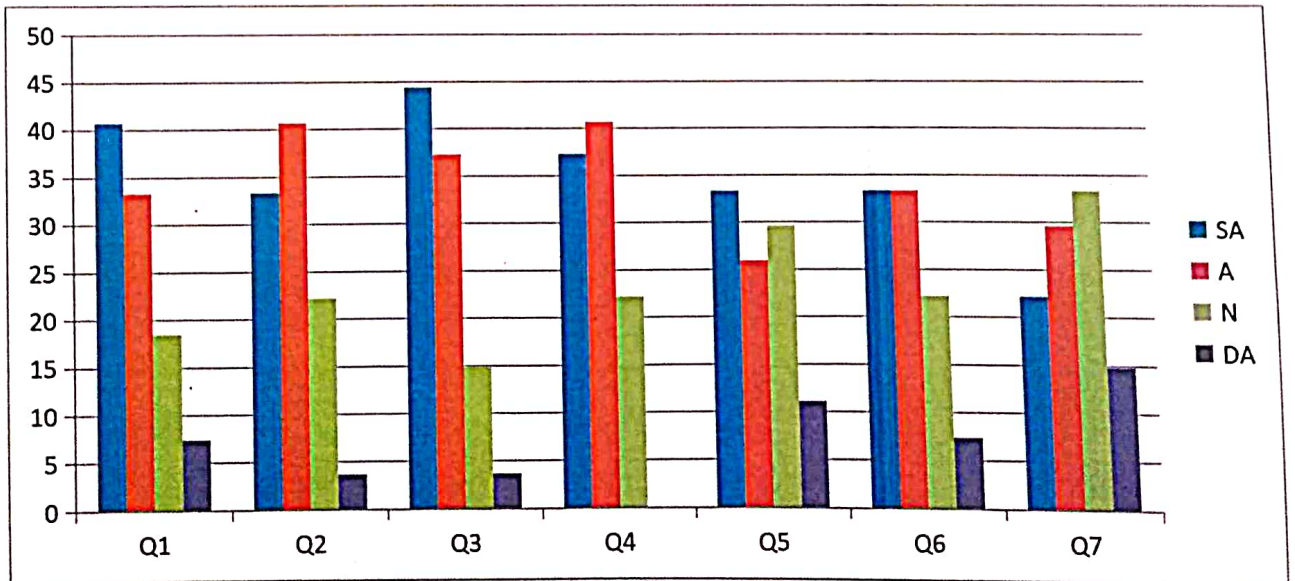



Terna Public Charitable Trust's
Terna Mahavidyalaya (Arts, Science & Commerce), Osmanabad
STUDENT'S FEEDBACK ON CURRICULAM
2022-23 B.A. I,II,III

Parameters	Strongly Agree	Agree	Neutral	Disagree
1 Present syllabus covers the current issues of the subject	34	13	1	0
2 Current syllabus is relevant to the career and future of the students	22	25	1	0
3 In the present syllabus , the learning objectives are clear and appropriate	22	22	4	0
4 The reading material and reference books regarding curriculum are easily available.	21	25	2	0
5 The curriculum is well organized and easy to follow	19	24	5	0
6 The present curriculum helps to develop the overall personality of the students	24	21	3	0
7 Extend of effort required by student	26	17	5	0

Question	SA	A	N	DA
Q1	70.83	27.80	2.80	0
Q2	45.83	52.80	2.80	0
Q3	45.83	45.83	8.33	0
Q4	43.75	52.80	4.16	0
Q5	39.58	50.00	10.41	0
Q6	50.00	43.75	6.25	0
Q7	54.16	35.41	10.41	0

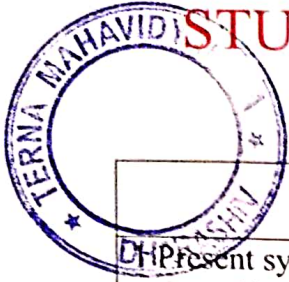



PRINCIPAL
 TERNA MAHAVIDYALAYA
 (Arts, Science & Commerce)
 Osmanabad

Terna Public Charitable Trust's
Terna Mahavidyalaya (Arts, Science & Commerce), Osmanabad

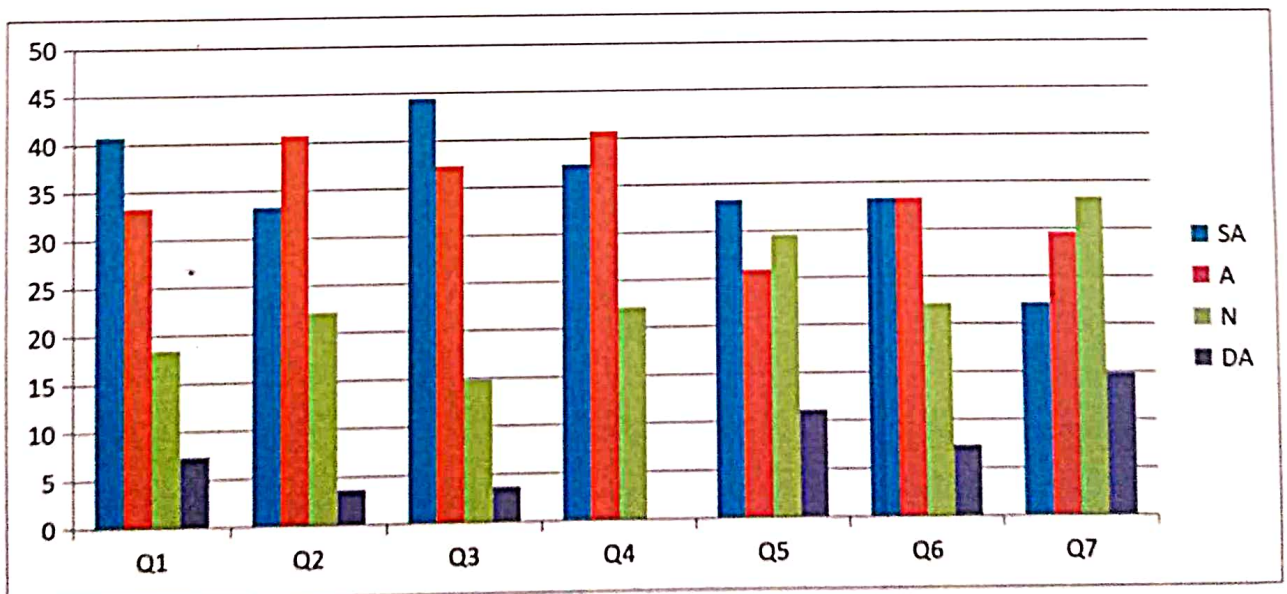
STUDENT'S FEEDBACK ON CURRICULAM

2022-23 B.C.A. I,II,III



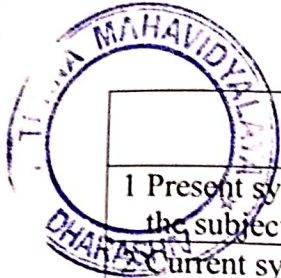
Parameters	Strongly Agree	Agree	Neutral	Disagree
1 Present syllabus covers the current issues of the subject	24	7	3	0
2 Current syllabus is relevant to the career and future of the students	14	20	0	0
3 In the present syllabus, the learning objectives are clear and appropriate	17	12	2	0
4 The reading material and reference books regarding curriculum are easily available.	19	13	3	0
5 The curriculum is well organized and easy to follow	21	9	3	1
6 The present curriculum helps to develop the overall personality of the students	19	9	4	1
7 Extend of effort required by student	18	13	3	0

Question	SA	A	N	DA
Q1	70.58	20.58	8.82	0
Q2	41.17	58.82	0	0
Q3	50.00	35.29	5.88	0
Q4	55.88	38.23	8.82	0
Q5	61.76	26.47	8.82	2.94
Q6	55.88	26.47	11.76	2.94
Q7	52.94	38.23	8.82	0



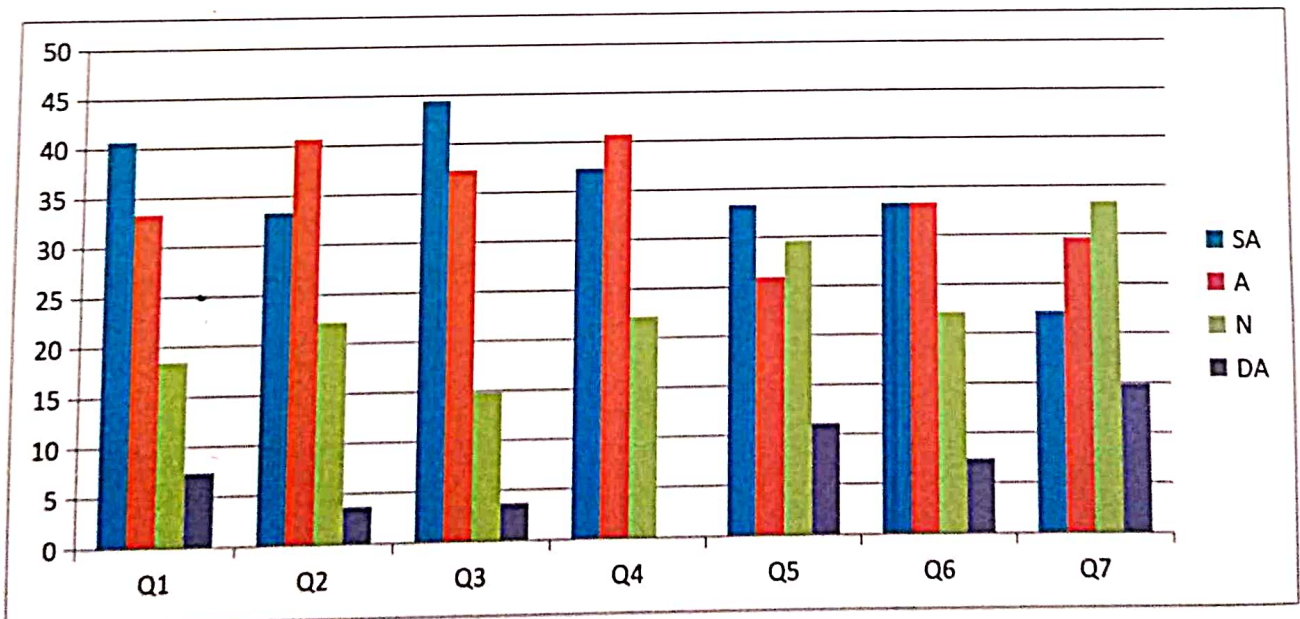

PRINCIPAL
 TERNA MAHAVIDYALAYA
 (Arts, Science & Commerce)

Terna Public Charitable Trust's
Terna Mahavidyalaya (Arts, Science & Commerce), Osmanabad
STUDENT'S FEEDBACK ON CURRICULAM
2022-23 B.C.S. I,II,III



Parameters	Strongly Agree	Agree	Neutral	Disagree
1 Present syllabus covers the current issues of the subject	14	17	3	4
2 Current syllabus is relevant to the career and future of the students	10	20	8	0
3 In the present syllabus, the learning objectives are clear and appropriate	9	20	7	2
4 The reading material and reference books regarding curriculum are easily available.	10	24	2	2
5 The curriculum is well organized and easy to follow	17	14	8	0
6 The present curriculum helps to develop the overall personality of the students	17	14	6	1
7 Extend of effort required by student	9	22	6	1

Question	SA	A	N	DA
Q1	41.17	50.00	8.82	11.76
Q2	29.41	58.82	23.52	0
Q3	26.47	58.82	20.58	5.88
Q4	29.41	70.58	5.88	5.88
Q5	50.00	41.17	23.52	0
Q6	50.00	41.17	17.64	2.94
Q7	26.47	64.70	17.64	2.94

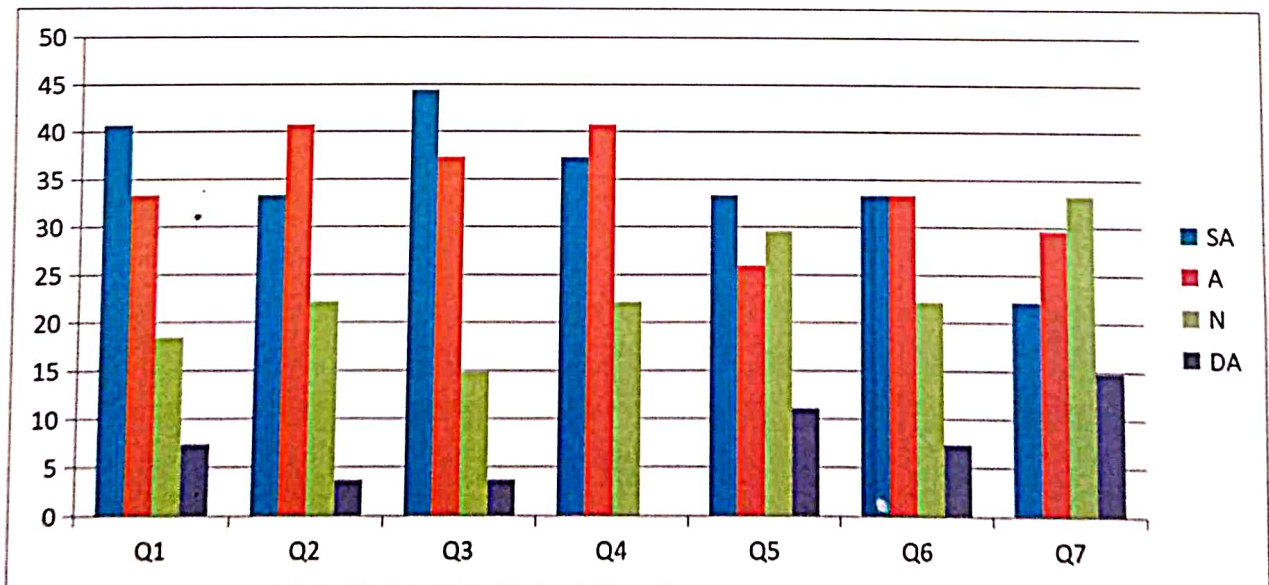



PRINCIPAL
 Terna Mahavidyalaya
 (Arts, Science & Commerce)

Terna Public Charitable Trust's
Terna Mahavidyalaya (Arts, Science & Commerce), Osmanabad
STUDENT'S FEEDBACK ON CURRICULAM
2022-23 M.Sc.(C.S.) I, II

Parameters	Strongly Agree	Agree	Neutral	Disagree
1 Present syllabus covers the current issues of the subject	11	9	5	2
2 Current syllabus is relevant to the career and future of the students	9	11	6	1
3 In the present syllabus, the learning objectives are clear and appropriate	12	10	4	1
4 The reading material and reference books regarding curriculum are easily available.	10	8	8	1
5 The curriculum is well organized and easy to follow	10	11	6	0
6 The present curriculum helps to develop the overall personality of the students	9	7	8	3
7 Extend of effort required by student	9	9	6	2

Question	SA	A	N	DA
Q1	40.74	33.33	18.51	7.40
Q2	33.33	40.74	22.22	3.70
Q3	44.44	37.3	14.81	3.70
Q4	37.30	40.74	22.22	0
Q5	33.33	25.92	29.62	11.11
Q6	33.33	33.33	22.22	7.40
Q7	22.22	29.62	33.33	14.81



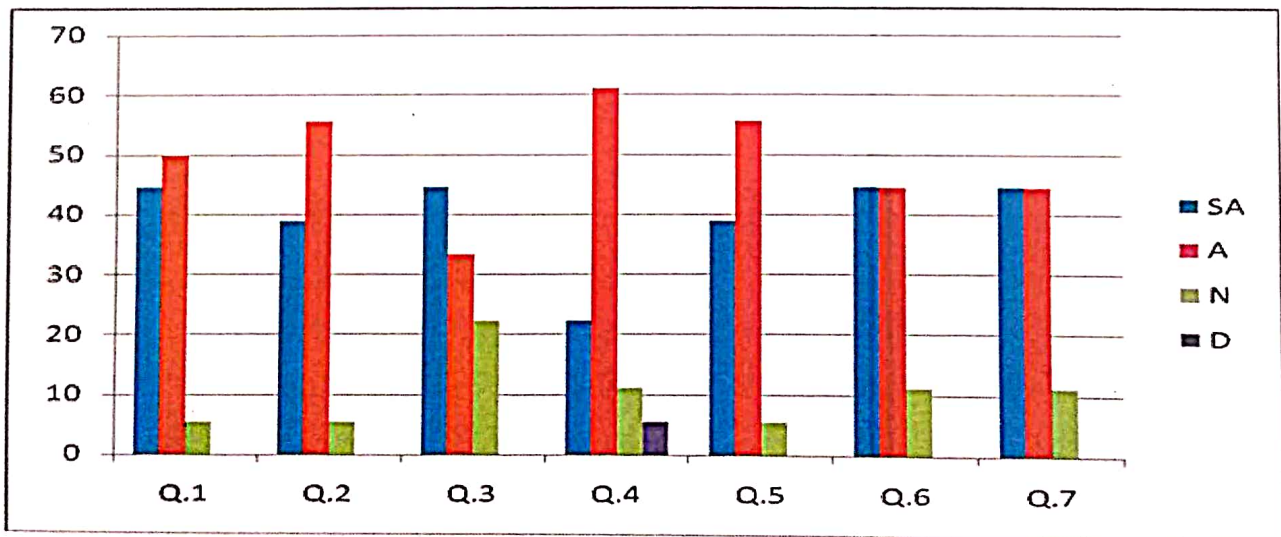

PRINCIPAL
 Terna Mahavidyalaya
 (Arts, Science & Commerce)
 Osmanabad


TEACHER'S FEEDBACK ON CURRICULAM

2022-23 B.A. I,II,III

Parameters	Strongly Agree	Agree	Neutral	Disagree
1 Present syllabus covers the current issues of the subject	08	09	1	0
2 Current syllabus is relevant to the career and future of the students	07	10	1	0
3 In the present syllabus , the learning objectives are clear and appropriate	08	06	4	0
4 The reading material and reference books regarding curriculum are easily available.	04	11	2	01
5 The curriculum is well organized and easy to follow	07	10	01	0
6 The present curriculum helps to develop the overall personality of the students	08	08	02	0
7 Extend of effort required by student	08	08	02	0

Question	SA	A	N	DA
Q1	44.44	50	5.55	0
Q2	38.88	55.55	5.55	0
Q3	44.44	33.33	22.22	0
Q4	22.22	61.11	11.11	5.55
Q5	38.88	55.55	5.55	0
Q6	44.44	44.44	11.11	0
Q7	44.44	44.44	11.11	0




PRINCIPAL
 Terna Mahavidyalaya
 (Arts, Science & Commerce),
 Dharashiv